

John E. Force Forestry Education Fund

Helping Young People Learn About
and Appreciate Forestry Resources

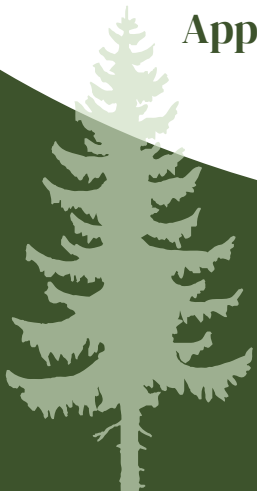
Typical projects supported by JEFFEF:

- ✓ Registration & transportation to forestry education sites & programs
- ✓ Costs for student field trips focused on forestry and forest products
- ✓ Classroom materials for forestry education classes
- ✓ Educational improvements to public forest areas

Applications accepted on demand.
www.sustainableinc.org



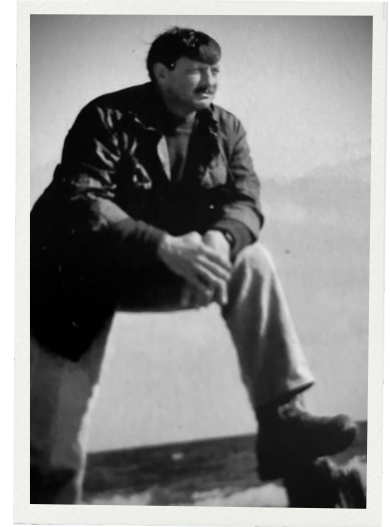
In memory of John E. Force, an Upper Peninsula consulting forester, who was very active in educating young people about forestry, wood products, and the natural resources of this beautiful part of the country.



More about the John E. Force Forestry Education Fund

The John E. Force Forestry Education Fund (JEFFEF) maintains a close relationship with the Forest Park and Iron River (MI) and Florence (WI) Public School systems, as well as the Florence Natural Resources Center.

The Fund specifically supports projects that educate young people about forestry and career opportunities in that field. The Fund is managed by a committee consisting of Jim Force, Nancy Hronkin, Kabby Jones, and Stu Boren.



Typical projects supported by JEFFEF include:

- Registration and transportation of students to forestry education sites and programs.
- Costs for student field trips focused on forestry and forest products.
- Classroom materials for teachers to use in forestry education classes.
- Educational improvements to public forest areas.
- And other educational programs and media related to forestry.

To date, the Fund has awarded over \$15,000 to support the education of more than 3,000 students since it was established in the fall of 2015. The goal of the Fund is to continue supporting projects as funding allows. Applications for funding are reviewed and awarded on a quarterly basis.

Application forms are available at www.sustainableinc.org.

The John E. Force Forestry Education Fund is administered by the Sustainable Resources Institute, Inc., 337 Superior Avenue, Crystal Falls, MI 49920 (www.sustainableinc.org). Contributions to the fund can be sent to Sustainable Resources Institute and are tax deductible to fullest extent of the law.



“Thank you for your donation...I had the best time (at Trees for Tomorrow). My favorite was the wetlands...We took notice of the wildlife, plants, and frogs, too. I learned how to identify trees. It was so much fun! I hope that some more kids can go too.” -5th Grade Student

